

DRIVEWAY APPROACH QUANTITIES - THIS SHEET

C/L STATION	Culv End Sect, 12 inch (Ea)	Culv, CI F, 12 inch (Ft)
18+30 L	2	16
TOTAL	2	16

REMOVAL QUANTITIES - THIS SHEET

0.2 Acre	Clearing
3 Ea	Tree, Rem, 19 inch to 36 inch
1 Ea	Tree, Rem, 37 inch or Larger
8 Ea	Tree, Rem, 6 inch to 18 inch
6 Ea	Tree, Rem, Less than 6 inch
2 Ea	Culv, End, Rem, Less than 24 inch

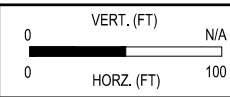
4/23/2021 4:48 PM Olivia.Vanabst

FINAL PLAN REVISIONS

NO.	DATE	AUTH	DESCRIPTION



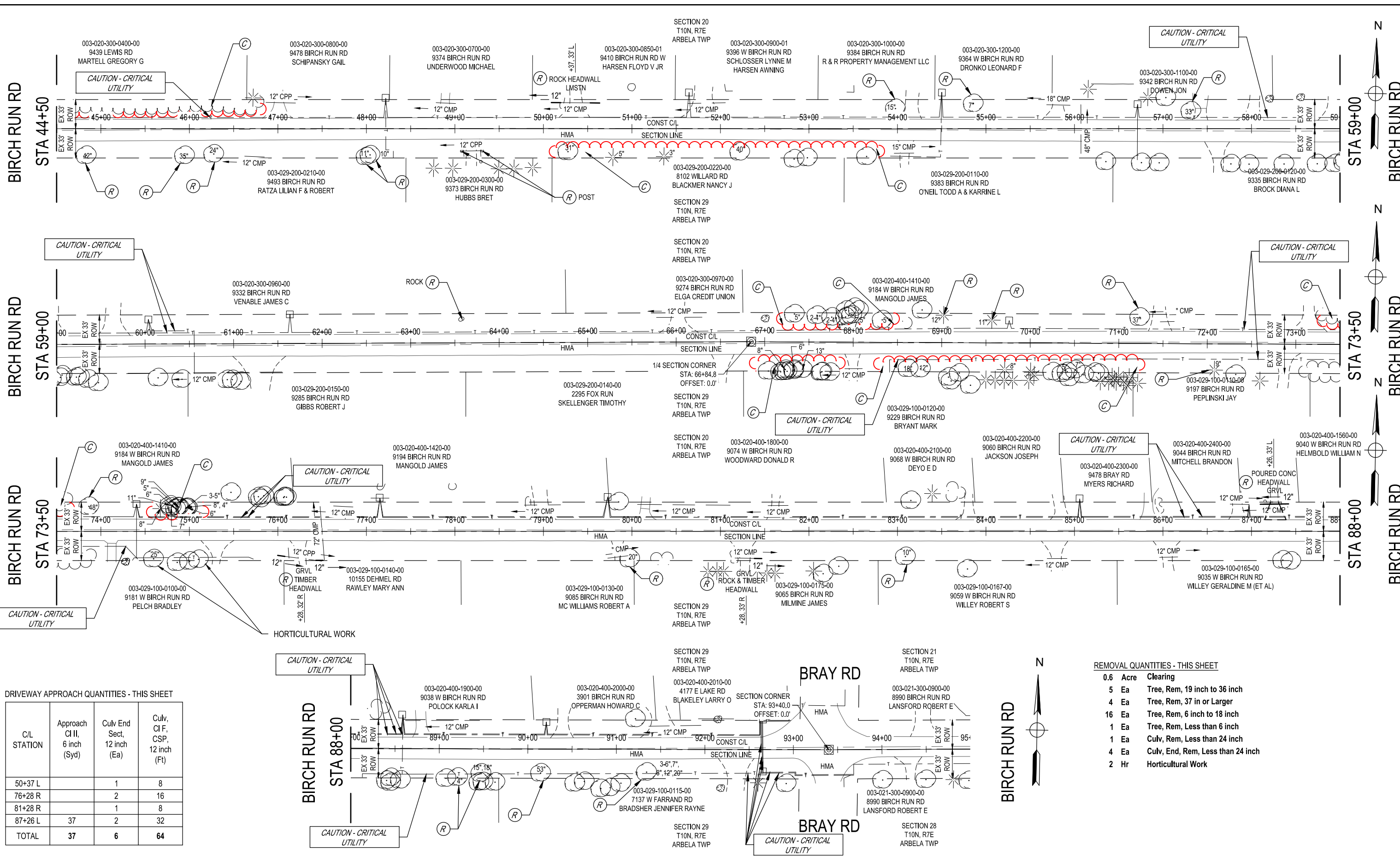
SAGINAW OFFICE
230 S. Washington Ave.
Saginaw, MI 48607
Tel. 989-754-4717
Fax. 989-754-4440
www.SpicerGroup.com



SGI PROJECT NO: 128551SG2020
DATE: APRIL, 2021
FILE: BR_LP-PLAN.DWG

CS: 79051
JN: 210364

CONSTRUCTION		DRAWING	SHEET
BIRCH RUN ROAD		PLAN30	34
STA 1+00 (POB) TO STA 44+50			



DRIVEWAY APPROACH QUANTITIES - THIS SHEET

C/L STATION	Approach C/L, 6 inch (Syd)	Culv End Sect, 12 inch (Ea)	Culv, C/F, CSP, 12 inch (Ft)
50+37 L		1	8
76+28 R		2	16
81+28 R		1	8
87+26 L	37	2	32
TOTAL	37	6	64

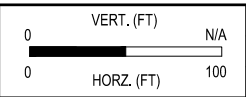
REMOVAL QUANTITIES - THIS SHEET

Quantity	Item	Description
0.6	Acre	Clearing
5	Ea	Tree, Rem, 19 inch to 36 inch
4	Ea	Tree, Rem, 37 in or Larger
16	Ea	Tree, Rem, 6 inch to 18 inch
1	Ea	Tree, Rem, Less than 6 inch
1	Ea	Culv, Rem, Less than 24 inch
4	Ea	Culv, End, Rem, Less than 24 inch
2	Hr	Horticultural Work

FINAL PLAN REVISIONS			
NO.	DATE	AUTH	DESCRIPTION



SAGINAW OFFICE
230 S. Washington Ave.
Saginaw, MI 48607
Tel: 989-754-4717
Fax: 989-754-4440
www.SpicerGroup.com

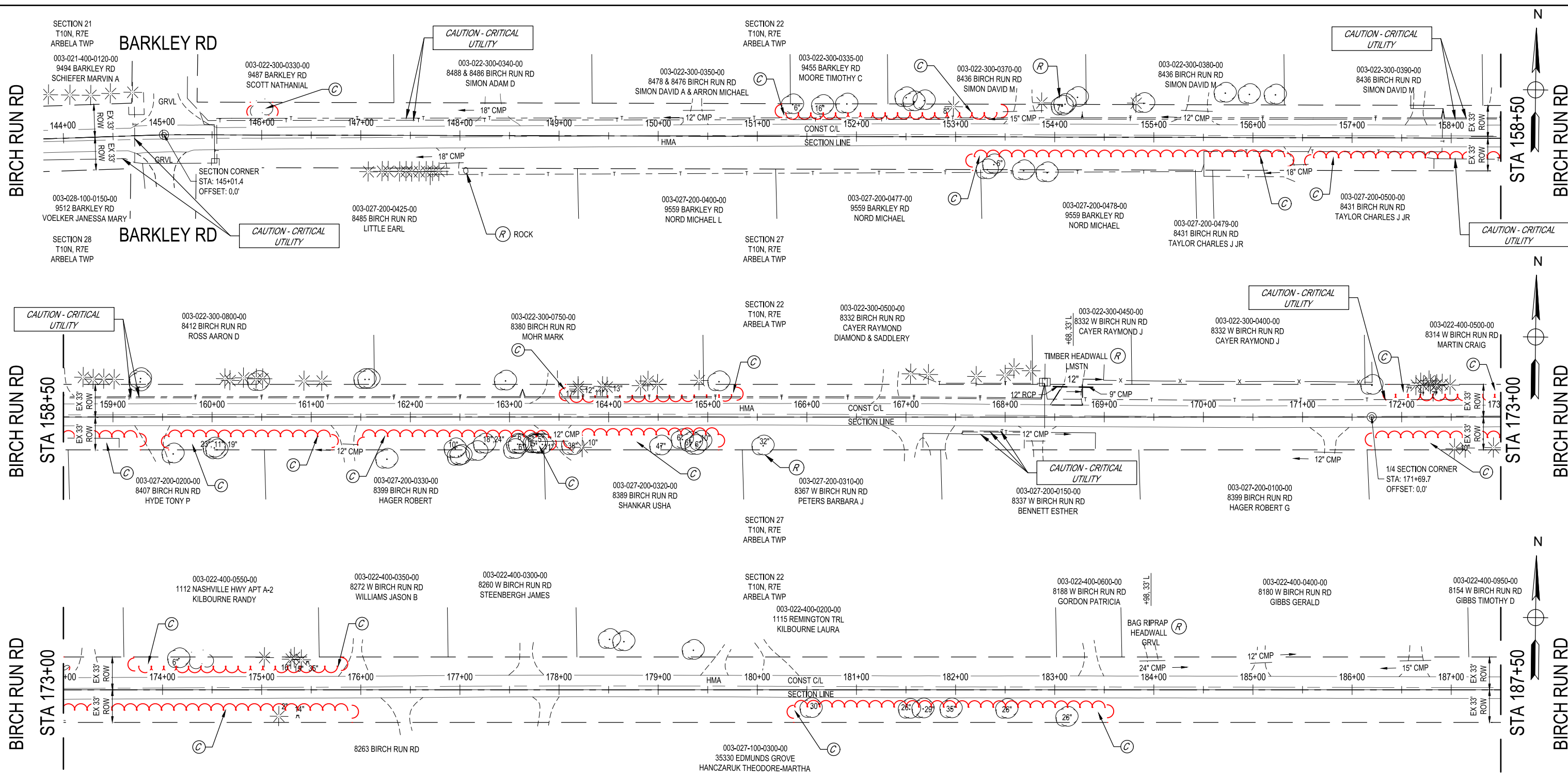


SGI PROJECT NO: 128551SG2020
DATE: APRIL, 2021
FILE: BR_LP-PLAN.DWG

CS: 79051
JN: 210364

CONSTRUCTION		DRAWING	SHEET
BIRCH RUN ROAD		PLAN31	35
STA 44+50 TO STA 93+40			

4/23/2021 4:48 PM Olivia.Vanatik



DRIVEWAY APPROACH QUANTITIES - THIS SHEET

C/L STATION	Approach, CI II, 6 inch, Modified (Syd)	Culv End Sect, 12 inch (Ea)	Culv, CI F, 12 inch (Ft)	Culv, Slp End Sect, 1 on 6, 24 inch, Longit (Ea)
168+68 L	60	2	40	
183+98 L				2
TOTAL	60	2	40	2

REMOVAL QUANTITIES - THIS SHEET

- 1.2 Acre Clearing
- 1 Ea Tree, Rem, 19 inch to 36 inch
- 1 Ea Tree, Rem, 6 inch to 18 inch
- 1 Ea Culv, Rem, Less than 24 inch
- 2 Ea Culv, End, Rem, 24 inch to 48 inch

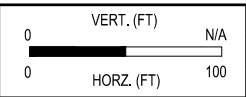
4/23/2021 4:48 PM Olinia.Vanaki

FINAL PLAN REVISIONS

NO.	DATE	AUTH	DESCRIPTION



SAGINAW OFFICE
230 S. Washington Ave.
Saginaw, MI 48607
Tel. 989-754-4717
Fax. 989-754-4440
www.SpicerGroup.com

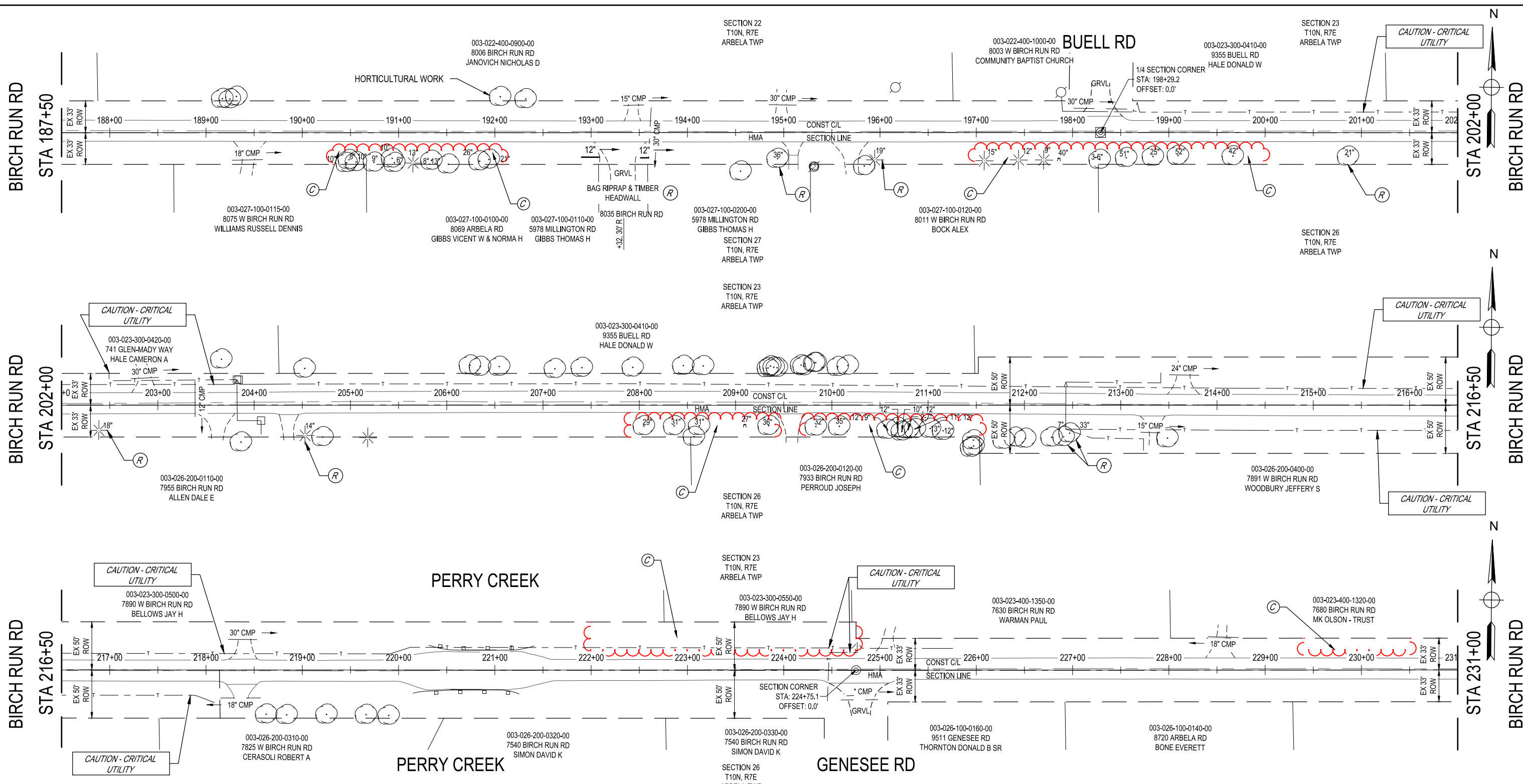


SGI PROJECT NO: 128551SG2020
DATE: APRIL, 2021
FILE: BR_LP-PLAN.DWG

CS: 79051
JN: 210364

CONSTRUCTION
BIRCH RUN ROAD
STA 145+01 TO STA 187+50

DRAWING SHEET
PLAN32 36



DRIVEWAY APPROACH QUANTITIES - THIS SHEET

C/L STATION	Culv End Sect, 12 inch (Ea)	Culv, CI F, 12 inch (Ft)
193+32 R	2	26
TOTAL	2	26

REMOVAL QUANTITIES - THIS SHEET

- 0.7 Acre Clearing
- 4 Ea Tree, Rem, 19 inch to 36 inch
- 3 Ea Tree, Rem, 6 inch to 18 inch
- 2 Ea Culv, End, Rem, Less than 24 inch
- 2 Hr Horticultural Work

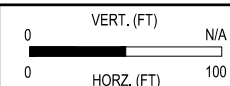
4/23/2021 4:48 PM Olivia.Vanastki

FINAL PLAN REVISIONS

NO.	DATE	AUTH	DESCRIPTION



SAGINAW OFFICE
230 S. Washington Ave.
Saginaw, MI 48607
Tel. 989-754-4717
Fax. 989-754-4440
www.SpicerGroup.com

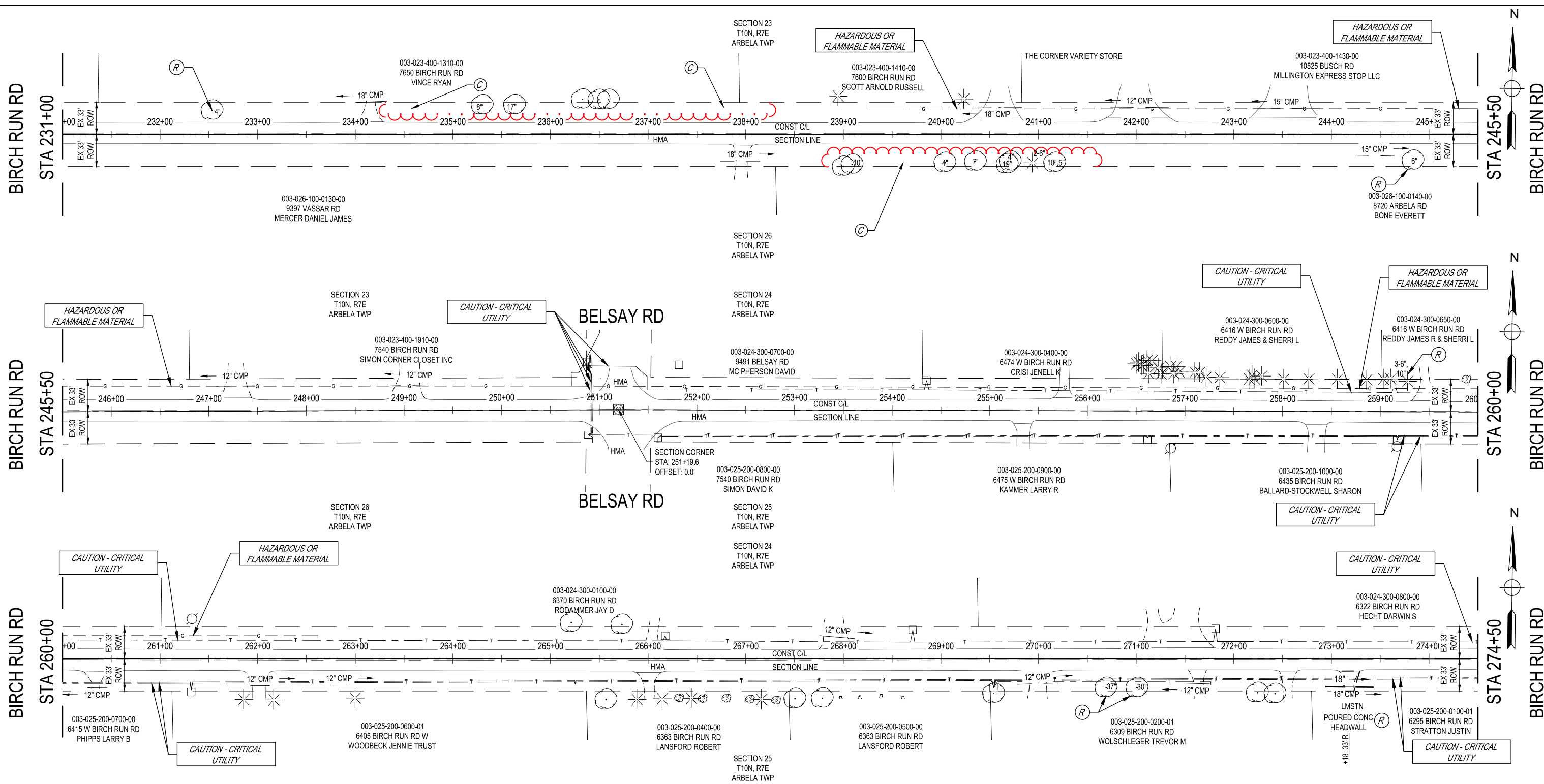


SGI PROJECT NO: 128551SG2020
DATE: APRIL, 2021
FILE: BR_LP-PLAN.DWG

CS: 79051
JN: 210364

CONSTRUCTION
BIRCH RUN ROAD
STA 187+50 TO STA 231+00

DRAWING SHEET
PLAN33 37



DRIVEWAY APPROACH QUANTITIES - THIS SHEET

C/L STATION	Approach, C II, 6 inch, Modified (Syd)	Culv, C I F, 18 inch (Ft)	Culv, Slp End Sect, 1 on 6, 18 inch, Longit (Ea)
273+18 R	35	48	2
TOTAL	35	48	2

REMOVAL QUANTITIES - THIS SHEET

- 0.3 Acre Clearing
- 1 Ea Tree, Rem, 19 inch to 36 inch
 - 1 Ea Tree, Rem, 37 in or Larger
 - 5 Ea Tree, Rem, 6 inch to 18 inch
 - 1 Ea Tree, Rem, Less than 6 inch
 - 1 Ea Culv, Rem, Less than 24 inch

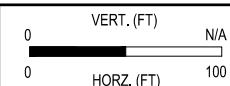
4/23/2021 4:48 PM Olivia.Vanastel

FINAL PLAN REVISIONS

NO.	DATE	AUTH	DESCRIPTION



SAGINAW OFFICE
230 S. Washington Ave.
Saginaw, MI 48607
Tel: 989-754-4717
Fax: 989-754-4440
www.SpicerGroup.com

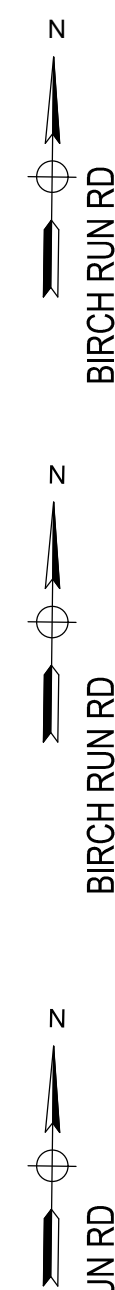
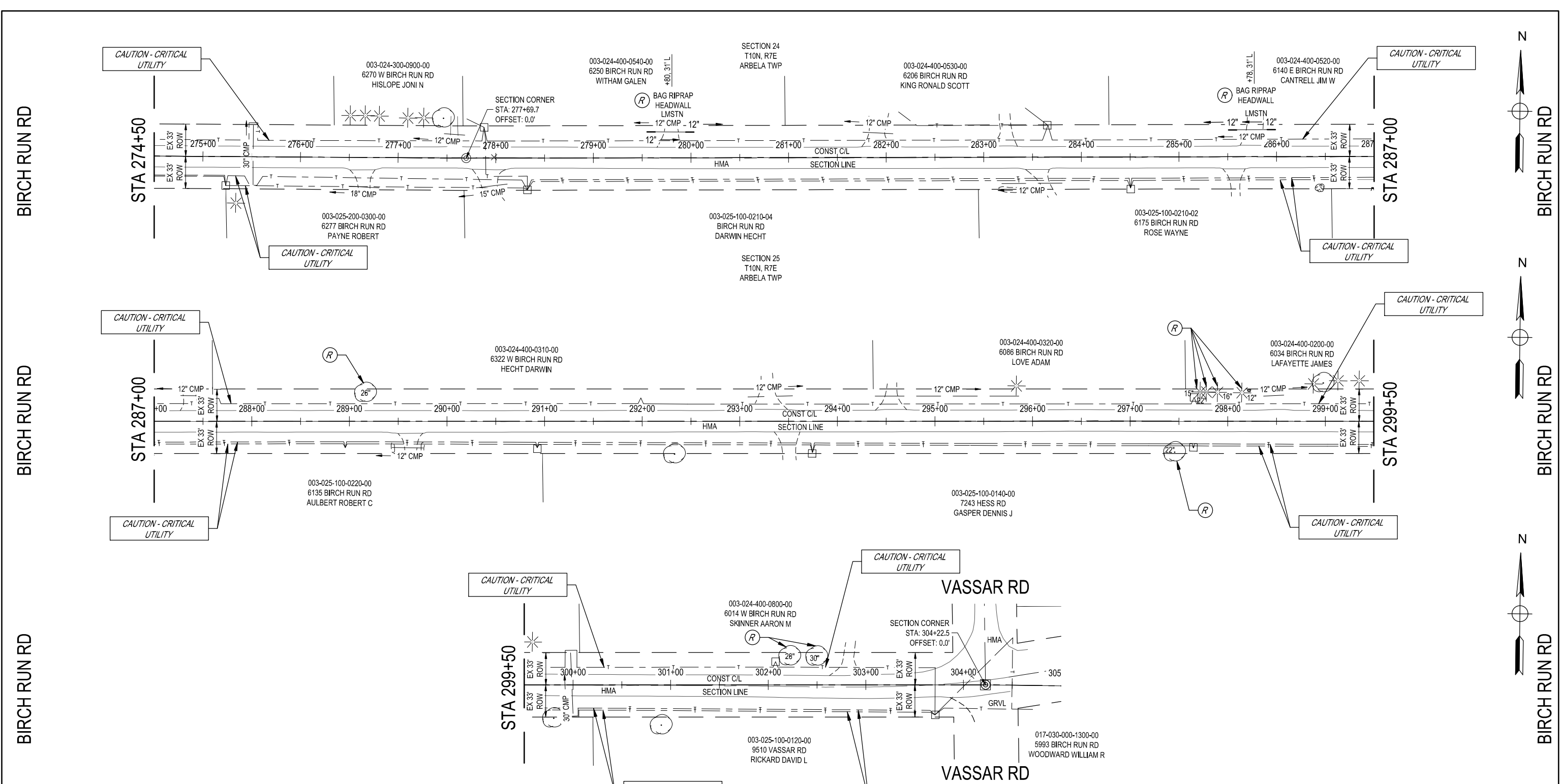


SGI PROJECT NO: 128551SG2020
DATE: APRIL, 2021
FILE: BR_LP-PLAN.DWG

CS: 79051
JN: 210364

CONSTRUCTION
BIRCH RUN ROAD
STA 231+00 TO STA 274+50

DRAWING SHEET
PLAN34 38



DRIVEWAY APPROACH QUANTITIES - THIS SHEET

C/L STATION	Culv End Sect, 12 inch (Ea)	Culv, CI F, CSP, 12 inch (Ft)
279+80 L	2	16
285+78 L	2	16
TOTAL	4	32

REMOVAL QUANTITIES - THIS SHEET

- 5 Ea Tree, Rem, 19 inch to 36 inch
- 3 Ea Tree, Rem, 6 inch to 18 inch
- 4 Ea Culv, End, Rem, Less than 24 inch

Addendum 1

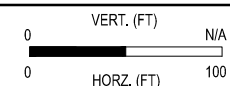
6/28/2021 11:13 AM katherine.pleminger

FINAL PLAN REVISIONS

NO.	DATE	AUTH	DESCRIPTION



SAGINAW OFFICE
230 S. Washington Ave.
Saginaw, MI 48607
Tel: 989-754-4717
Fax: 989-754-4440
www.SpicerGroup.com



SGI PROJECT NO: 128551SG2020
DATE: JUNE, 2021
FILE: BR_LP-PLAN.DWG

CS: 79051
JN: 210364

CONSTRUCTION
BIRCH RUN ROAD
STA 274+50 TO STA 304+22 (POE)

DRAWING SHEET
PLAN35 39